

Relentless Housekeeping

Reese Fortin & Paul Sprecco
Sundt – Building Group



What are the first things you see when entering a jobsite?



First Impressions



Reese & Paul's

- Personal protective equipment
- Housekeeping / overall condition
- Signage / posting / wayfinding
- Fall protection for work @ height
- Site logistics / layout / planning



First Impressions



An Insider from Cal/OSHA

- Personal protective equipment
- Overall housekeeping/cleanliness
- Warning signs and caution tape, safety information, and postings
- Fall protection (guardrails, tying off)
- Proper access including stairs, ladders, and construction elevators



First Impressions



An Insider from Old Republic Insurance Group

- Personal protective equipment
- Housekeeping (trash and organization of equip/materials)
- Fencing/signage
- Use/lack of fall protection
- If the team is generally interested in the safety performance of their project



Disorderly Jobsite: First Impressions



What first impressions does a messy jobsite give?



Disorderly Jobsite: First Impressions



Reese and Paul's

- Safety is not valued
- It's a chaotic work environment
- Probably having frequent and serious incidents
- No pride of ownership
- Candidate for the show "Hoarders"



Disorderly Jobsite: First Impressions

An Insider from Cal/OSHA

“A messy construction site is a sign the project has more issues [in addition to safety]”



Disorderly Jobsite: First Impressions



An Insider from Old Republic Insurance Group

If a job has bad housekeeping, it typically means the job is;

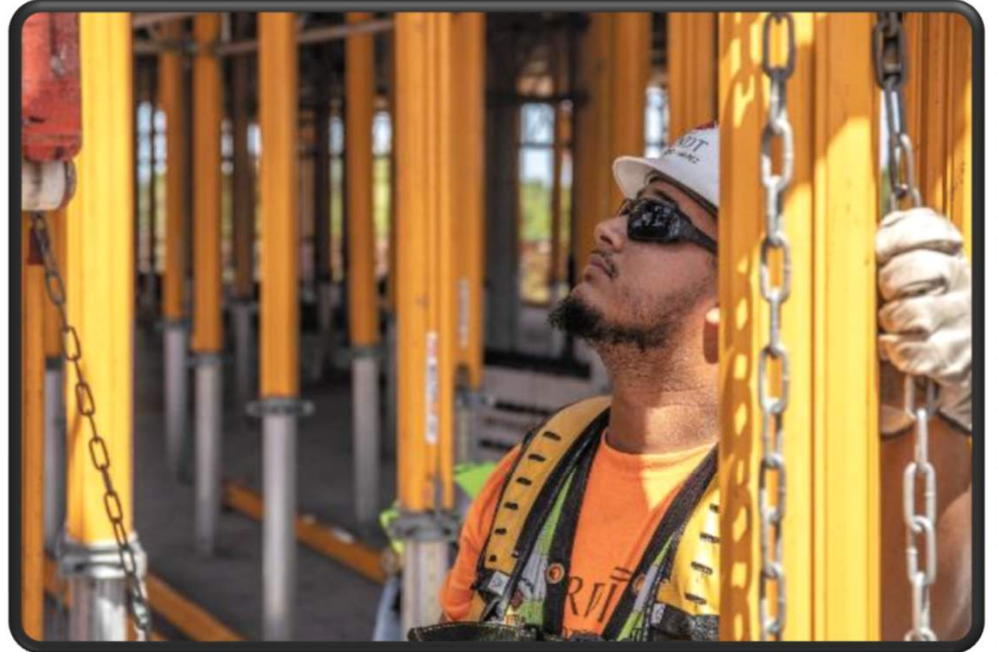
- poorly managed,
- behind schedule,
- pushing production harder than safety,
- going to have quality issues, and
- suffering from a lack of safety climate

From an insurance standpoint, this will lead to an increased risk of workers compensation/general liability losses.



Well-Kept Jobsite: First Impressions

What first impressions does a well-kept jobsite give?



Well-Kept Jobsite: First Impressions

Reese and Paul's



- Safety is valued by all levels
- Good leadership and management in place
- Active teamwork and partnership
- Supervision is engaged
- I want to work there!



Well-Kept Jobsite: First Impressions



An Insider from Cal/OSHA

- A well-kept site definitely improves the overall safety of the project and in the long run, saves money.
- It improves production and the morale of the workers.
- It makes my job easier and keeps me safe.



Well-Kept Jobsite: First Impressions

An Insider from Old Republic Insurance Group



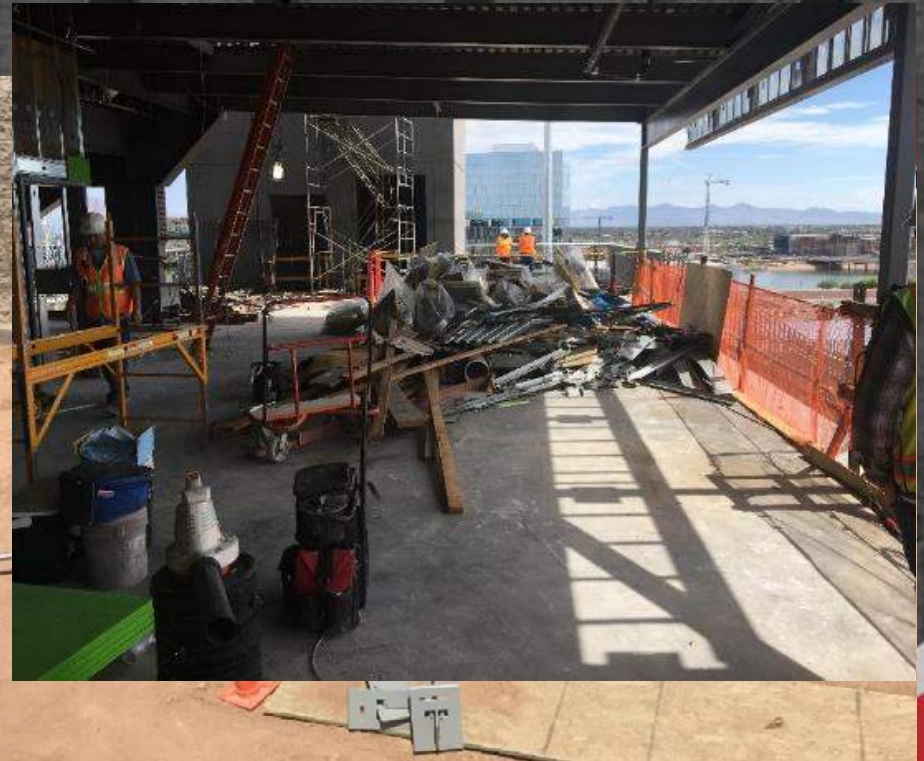
- A well-kept site usually means;
 - the general contractor is organized and has pride in their job,
 - Safety performance is at a higher level,
 - Quality performance is at a higher level
 - Overall, a “good risk” for the insurer



Enter...

Relentless Housekeeping





What Relentless Housekeeping is...



Trucks



Conex



Conex / Laydown



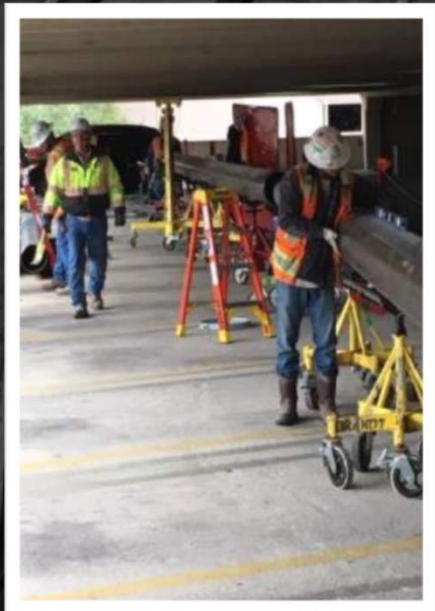
Laydown/Material Staging



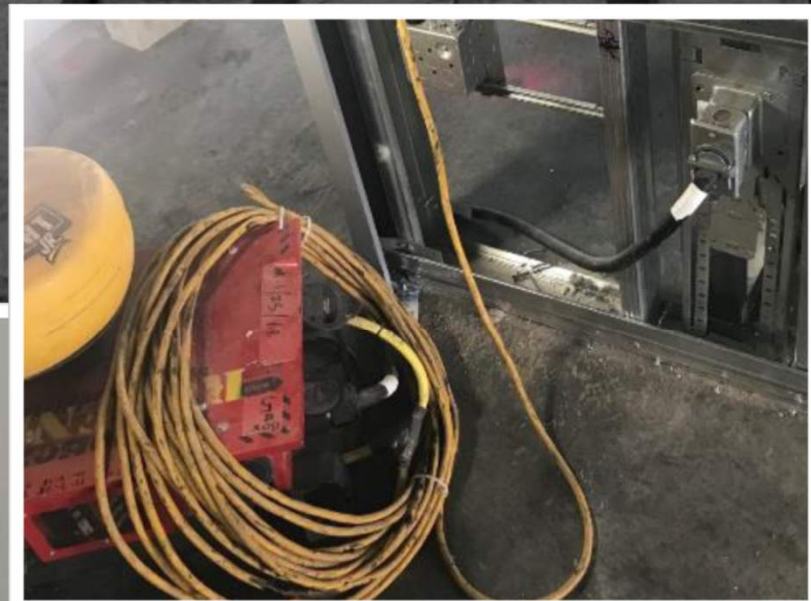
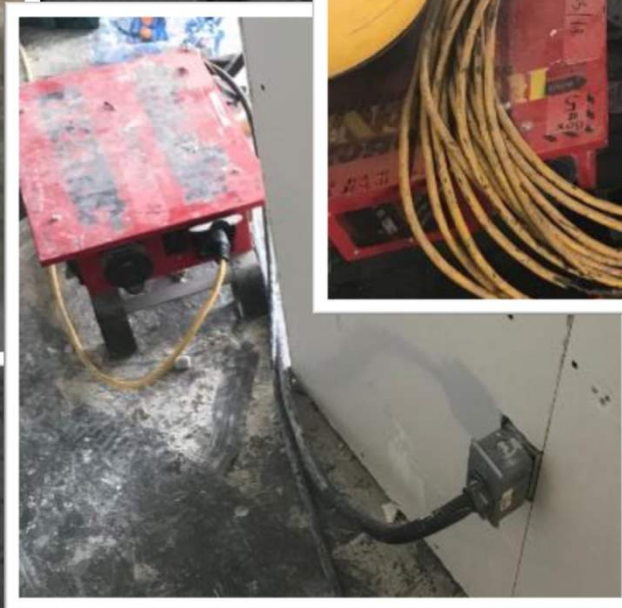
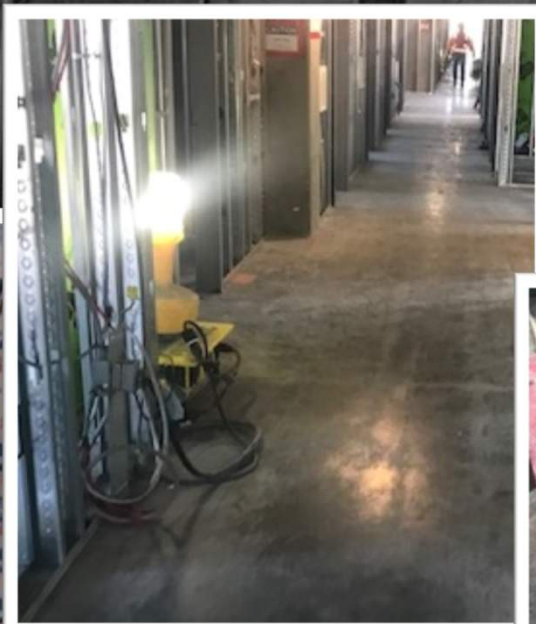
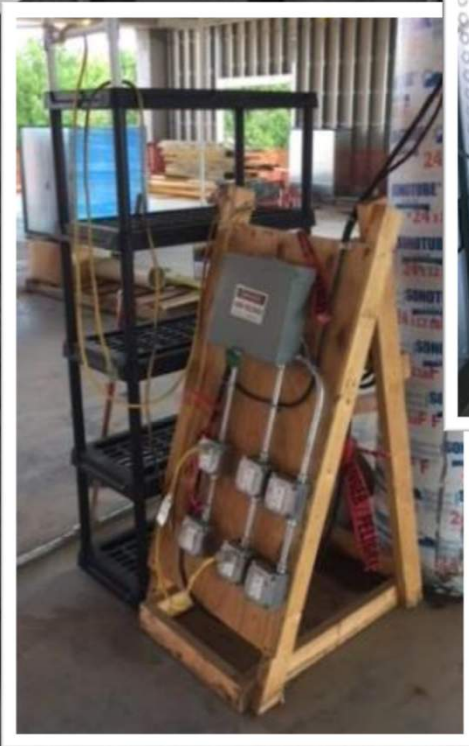
Tool Boxes



Walking/Working Areas



Cord Management



Relentless Housekeeping – Why?



The effects are not just a clean site:

- Shows our workers respect and dignity
- Gives our team pride
- Sends a good message to clients
- Contagious attitude
- Loud and clear message that safety is truly valued
- Breeds professionalism



Relentless Housekeeping - Expectations



It's Everywhere!

- Offices, job sites, trucks, etc.
- From everybody
- All day
- Every day

Operations are shut down until:

- **Work area(s) are properly addressed**, or
- **An action plan is agreed upon**



Relentless Housekeeping – Why?

According to the Craft @ Cal Poly Pomona Student Housing



The site cleanliness from day one for each trade set a great tone.

This project is carrying the safety torch in the industry. It stands out as the best from all the other sites we've been on.

We appreciate the site's condition and;

- organized lay down yard,
- clean sweep in abundance,
- plenty of toilet paper (cabinet w extra), and
- nice break area.



Relentless Housekeeping – Metrics

RECORDABLE INCIDENTS (ALL)

2

EXPOSURE HOURS (ALL)

1,700,038

RECORDABLE INCIDENT RATE (ALL)

0.24

Proof is in the pudding... Errr metrics!

Relentless Housekeeping rolled out company-wide in October 2018

No other initiatives

All Sundt projects involved

- transportation, industrial, building industries
- self-performed concrete
- CA, UT, AZ, NM, TX



Relentless Housekeeping – Metrics

FY '18 INCIDENTS

10-October

2

12-December

1

1-January

3

2-February

3

3-March

1

FY '19 INCIDENTS

2-February

2

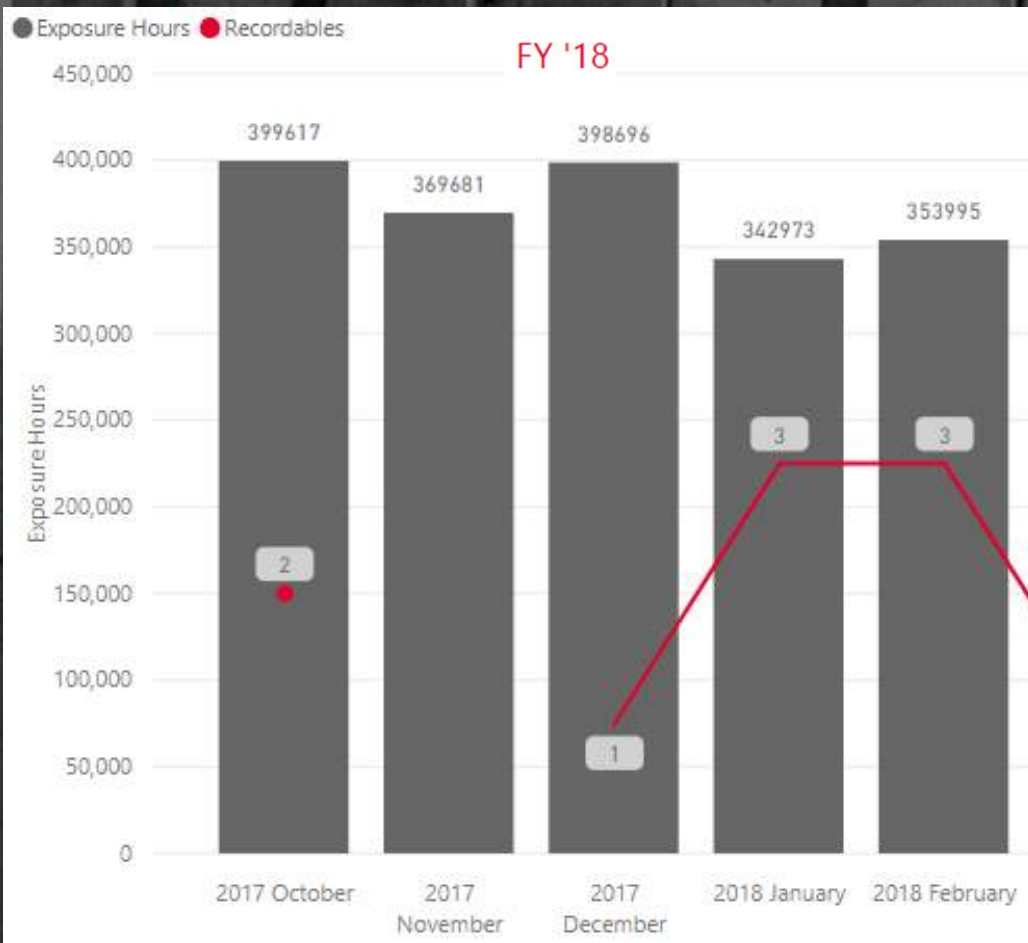


Relentless Housekeeping – Metrics

October 1-Feb 28	2018	2019
Recordables	9	2
Work Hours	1,864,962	1,700,038+
Recordable Incident Rate	0.97	0.24



Relentless Housekeeping – Metrics



Implementing Relentless Housekeeping



Implementing Relentless Housekeeping



Necessities

1. Senior leadership commitment
2. Management and trade contractor commitment and accountability
3. Measurement, recognition & enforcement
4. Written procedures and req's:
 1. Contract language
 2. Site-specific HS&E plan





SAFETY
INSPECTION



INCIDENT
INVESTIGATION



HOUSEKEEPING
ASSESSMENT



PMP SAFETY
ASSESSMENT



THA AUDIT

House Keeping Assessment

Use these fields to score housekeeping associated with the work (Housekeeping Score).

Check all that are compliant.

- ☐ Clean and definable access & egress
- ☐ Organized materials stacking and storage
- ☐ Timely and adequate trash management
- ☐ Work in progress controlled and managed
- ☐ Proper condition of tools, trucks & equipment

HK Assessment Comments:



RECOGNIZED



**WHAT GETS ~~MEASURED~~
IS WHAT GETS ~~DONE~~**



REPEATED



Handout: Sundt Housekeeping Requirements



Thank you!!

